

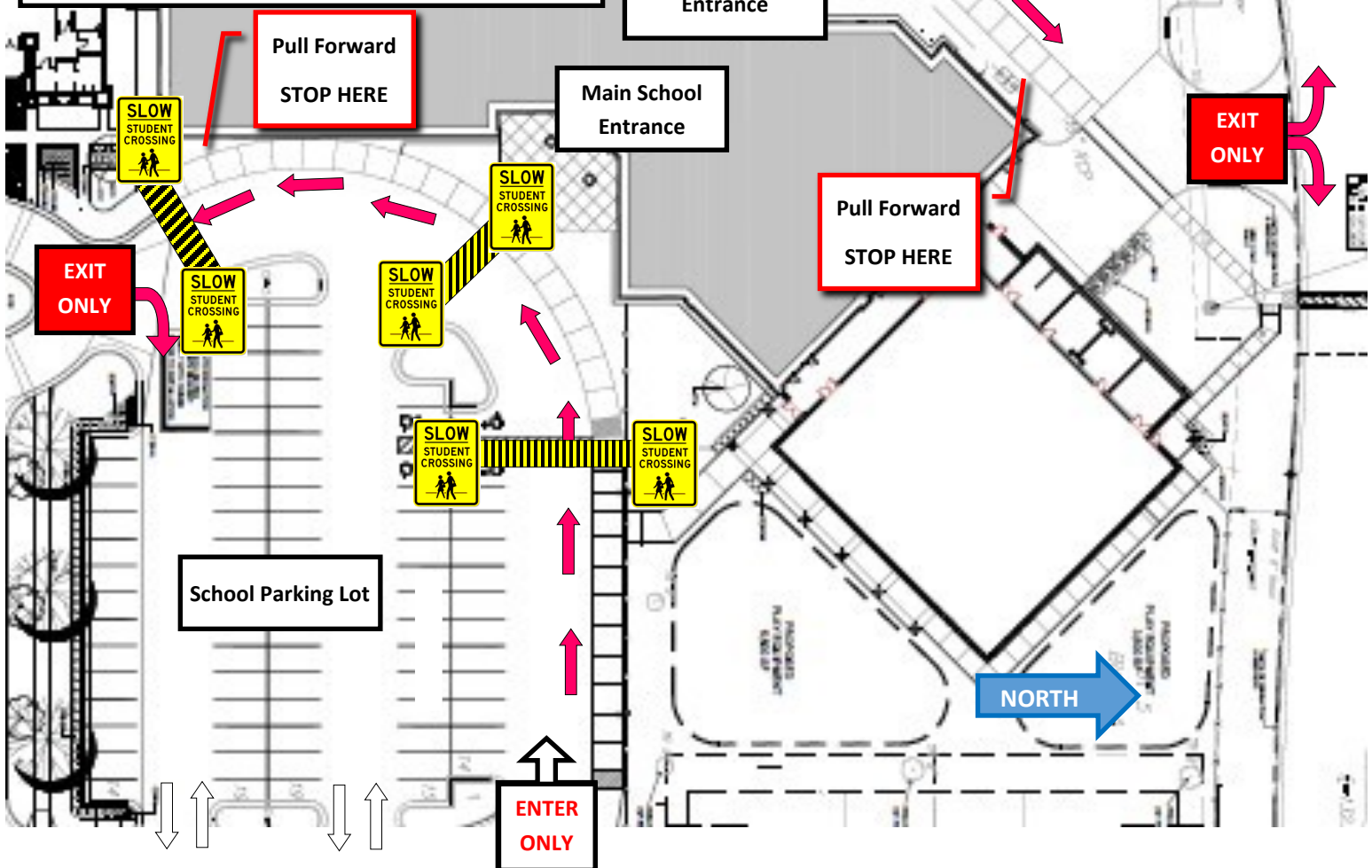
*St. Catherine of Siena
Catholic School*

Before School Traffic Flow



For the safety of all students, please follow these traffic flow guidelines during **before school drop off** times (7:15-7:50):

- Please park in designated parking areas only and used monitored crosswalks.
- When using the **drop-off express lanes (pink)**, pull as far forward as possible, staying behind the car in front.
- Make sure your students are ready to exit the car when it is stopped.
- Students should exit closest to the curb and avoid moving between cars.
- Make only one stop in the express lane. *If you need to make multiple stops or have time consuming tasks (saying goodbyes, signing agendas, etc.), please park in the **school parking lot**.*
- Once in the express lane, do not pass.
- Please remember that this is a **school zone** and **slow down** and **watch all crosswalks**.



St. Catherine of Siena
Catholic School
After School Traffic Flow



For the safety of all students, please follow these traffic flow guidelines during **after school pick up** times (3:00-3:40):

- Please park in designated parking areas/stalls only.
- **Preschool & PreK students** will be dismissed at 3:15 via the Early Childhood Entrance. **Grades K-8 students** will be dismissed at 3:25. Students in grades K-2 will be supervised by their teacher until a parent or older sibling retrieves them.
- Communicate with your student in which lot you will park (School or Church) .
- **SAFE ZONE:** The School parking lot will be **CLOSED** to entering or exiting vehicles from 3:20 PM-3:40 PM each day. Vehicles in the school lot will be allowed to exit their parking stalls at 3:40 PM.
- Please remember that this is a **school zone** and **slow down** and **watch all crosswalks**.

